

SACRED HEARTS CENTRAL SCHOOL

7-31 MORRIS STREET, COOTAMUNDRA NSW

CIVIL DESIGN DRAWINGS



IMAGE COURTESY OF SIX-MAPS.

DRAWING SCHEDULE - CIVIL		
DWG NO.	TITLE	SHEET
DA.0000	COVER SHEET	1 OF 1
DA.0200	STORMWATER DRAINAGE AND SEDIMENT CONTROL PLAN	1 OF 1
DA.0500	CATCHMENT PLAN	1 OF 1

PRELIMINARY ISSUE
NOT FOR CONSTRUCTION

ISSUE	DESCRIPTION	APPROVED	DATE
P2	DA ISSUE		11.12.25
P1	DRAFT DA ISSUE		18.09.25

ARCHITECT

webber

Phone: 02 4938 9333
PO Box 937 The Junction NSW 2281
www.webberarchitects.com

Suite 3, Level 1, 428 Hunter Street Newcastle NSW 2300
newcastle@webberarchitects.com

Suite 206, 8 Clarke Street Crown NSW 2005
sydney@webberarchitects.com

BIRZULIS ASSOCIATES

CONSULTING STRUCTURAL & CIVIL ENGINEERS

2/163 KING STREET, NEWCASTLE NSW 2300
tel: (02) 4049 4855 email: office@birzulisassociates.com
www.birzulisassociates.com

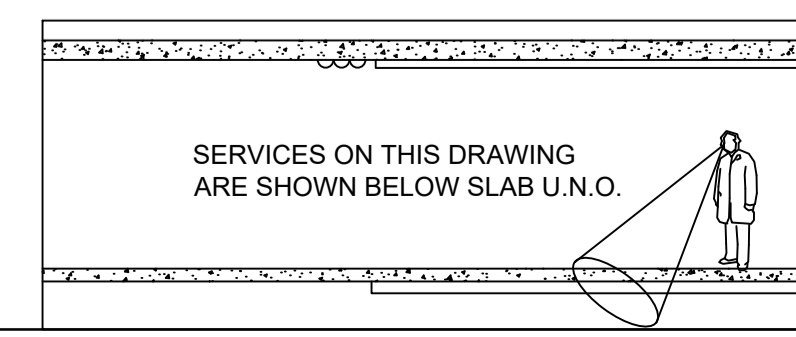
PROJECT

SACRED HEARTS CENTRAL SCHOOL
7-31 MORRIS STREET, COOTAMUNDRA NSW

TITLE

COVER SHEET

SCALES	DATE	
N/A @ A1	SEPT' 2025	
DESIGN	VERIFIED	
J.M	C.M	
APPROVED		
ISSUE	PROJECT No.	DRAWING No.
P2	251008	DA.0000

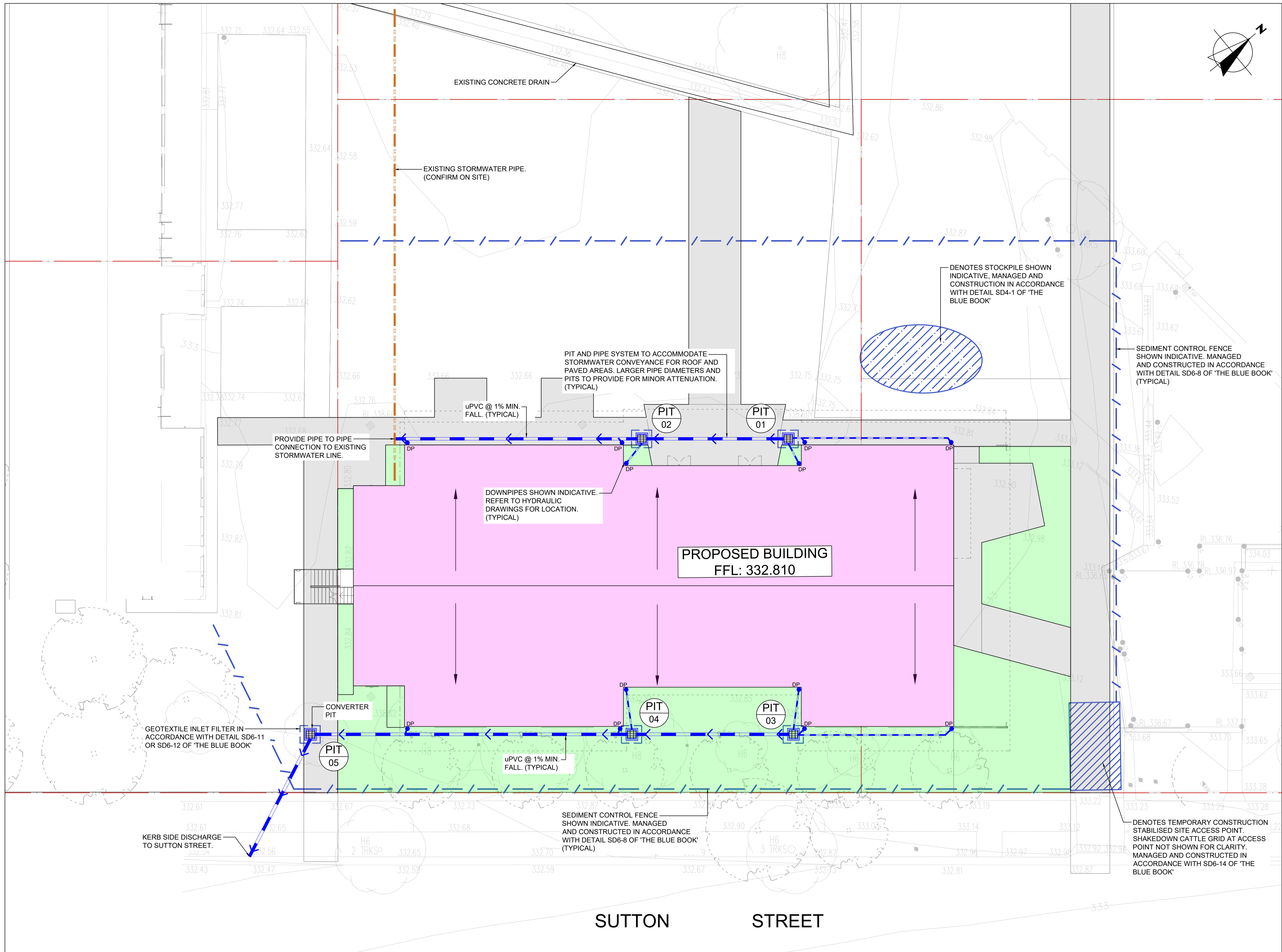


DIAL BEFORE YOU DIG

DIAL BEFORE YOU DIG
www.1100.com.au

IMPORTANT: THE CONTRACTOR IS TO MAINTAIN A CURRENT SET OF "DIAL BEFORE YOU DIG" DRAWINGS ON SITE AT ALL TIMES.

PRINT IN COLOUR



LEGEND:

PROPERTY BOUNDARY	
PROPOSED CONTOUR	
EXISTING CONTOUR	
ARCHITECTURAL DESIGN	
PROPOSED CIVIL DESIGN	
EXISTING SURVEY	
SUBSOIL DRAINAGE LINE	
STORMWATER LINE (GRAVITY)	
STORMWATER LINE (CHARGED)	
EXISTING STORMWATER LINE	
GRATED STORMWATER PIT	
EXISTING STORMWATER PIT	
KERB INLET PIT	
DOWN PIPE	
EXISTING DOWN PIPE	
FLOOR WASTE	
CLEAR OUT	
NEW GRATED DRAIN	
OVERLAND FLOW	
RAINWATER TANK	
RAIN WATER OUTLET	
GRASS SWALE	
DENOTES IMPERVIOUS AREA - ROOF	
DENOTES IMPERVIOUS AREA - PAVEMENT	
DENOTES PERVIOUS AREA - LANDSCAPE	

DESIGN NOTES:

THE PROPOSED DEVELOPMENT SITE IS GOVERNED BY COOTAMUNDRA SHIRE COUNCIL. STORMWATER SYSTEM FOR THE DEVELOPMENT HAS BEEN DESIGNED IN ACCORDANCE WITH THE COUNCIL'S DESIGN GUIDELINES.

WATER QUANTITY AND WATER QUALITY:
STORMWATER PITS AND PIPES HAS BEEN PROPOSED TO COLLECT STORMWATER RUNOFF FROM THE PROPOSED DEVELOPMENT AND CONNECT IT TO THE EXISTING STORMWATER SYSTEM. THE COUNCIL'S DESIGN GUIDELINES DOES NOT SPECIFY REQUIREMENT FOR ON-SITE DETENTION (OSD) SYSTEM. THEREFORE DETENTION SYSTEM HAS NOT BEEN PROPOSED.

NO WATER QUALITY TREATMENT MEASURES HAVE BEEN PROVIDED AS PART OF THIS DEVELOPMENT. THE COUNCIL'S DEVELOPMENT CONTROL PLAN DOES NOT PRESCRIBE WATER QUALITY OBJECTIVES OR REDUCTION TARGETS. STORMWATER RUNOFF FROM THE PROPOSED WORKS HAS THEREFORE BEEN DESIGNED TO MATCH THE EXISTING DRAINAGE REGIME, WITH FLOWS DISCHARGING TO THE EXISTING ROAD NETWORK IN ACCORDANCE WITH CURRENT SITE CONDITIONS

PRELIMINARY ISSUE
NOT FOR CONSTRUCTION

P2	DA ISSUE	11.12.25
P1	DRAFT DA ISSUE	18.09.25
ISSUE	DESCRIPTION	APPROVED

ARCHITECT

webber

Phone: 02 4558 1010
PO Box 101 The Junction NSW 2201
www.webber.com.au

Building 3, Level 1, 428 Hunter Street Newcastle NSW 2300
newcastle@webber.com.au

Building 306, 8 Clarke Street Crown Hill NSW 2055
sydney@webber.com.au

BIRZULIS ASSOCIATES

CONSULTING STRUCTURAL & CIVIL ENGINEERS

583 DARLING STREET ROZELLE NSW 2039
tel: (02) 9555 7230 email: office@birzulisassociates.com
www.birzulisassociates.com

PROJECT

SACRED HEARTS CENTRAL SCHOOL
7-31 MORRIS STREET, COOTAMUNDRA NSW

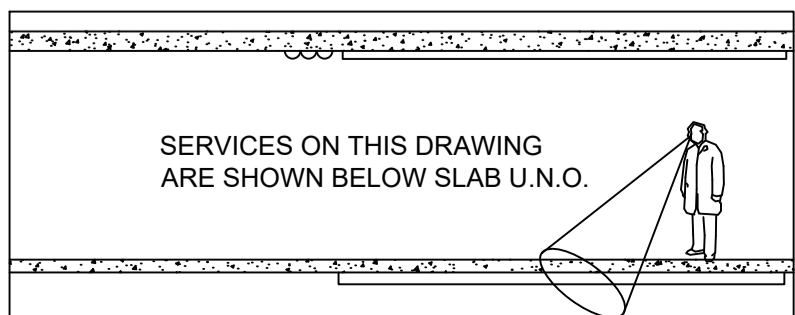
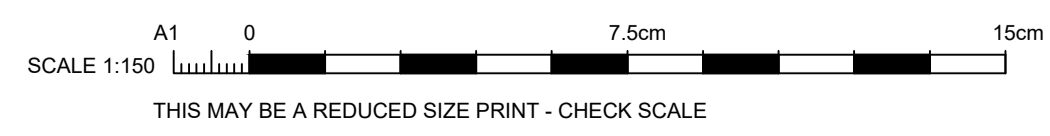
TITLE

STORMWATER DRAINAGE AND SEDIMENT CONTROL PLAN

SCALES	1:150 @ A1	DATE	SEPT' 2025
DRAWN	J.M	DESIGN	G.K
VERIFIED	C.M	APPROVED	
ISSUE	P2	PROJECT No.	251008
DRAWING No.	DA.0200		

STORMWATER DRAINAGE AND SEDIMENT CONTROL PLAN
SCALE 1:150

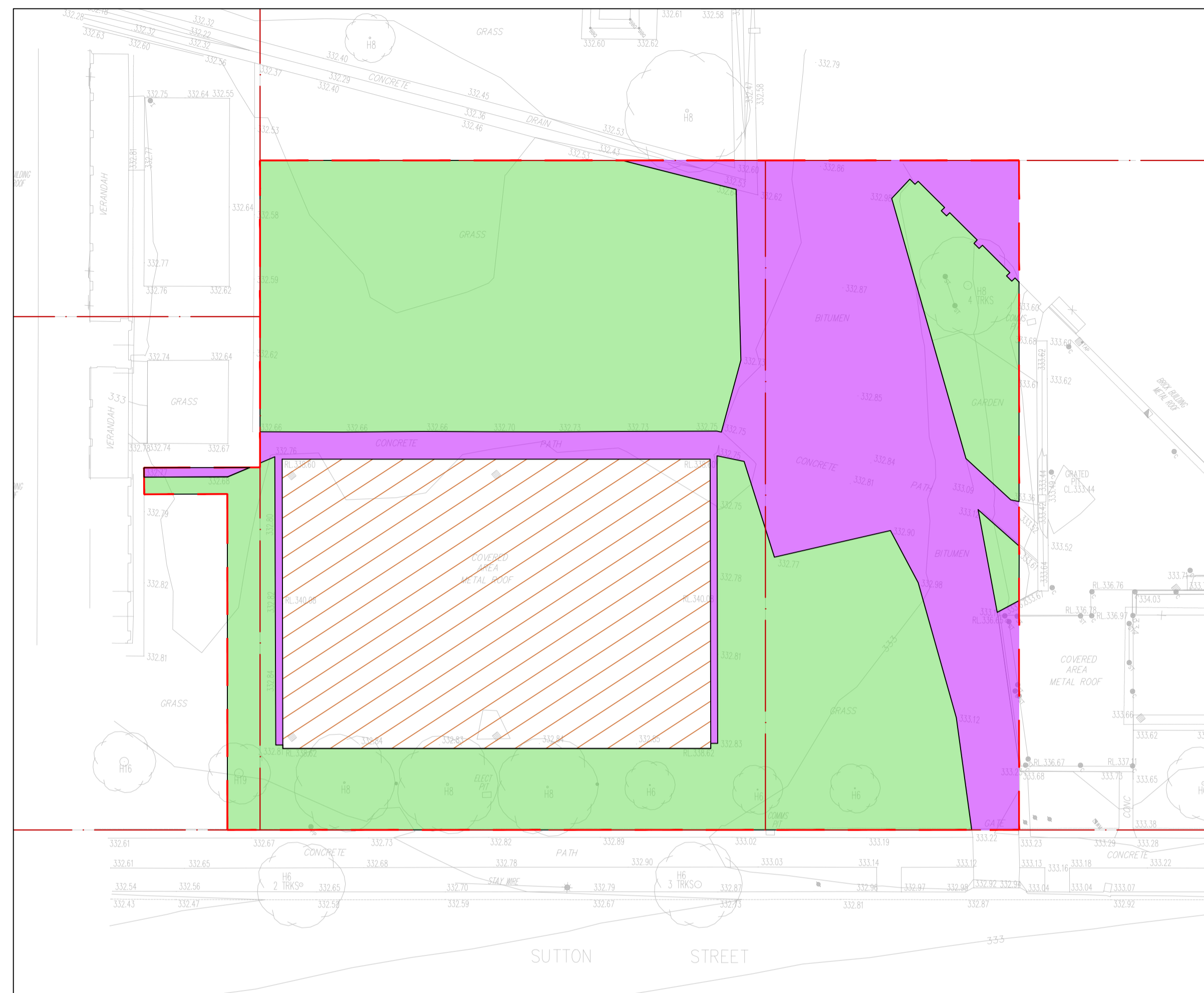
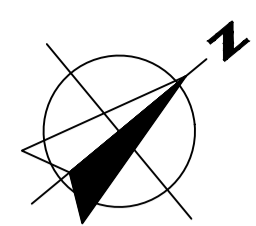
PRINT IN COLOUR



DIAL BEFORE YOU DIG

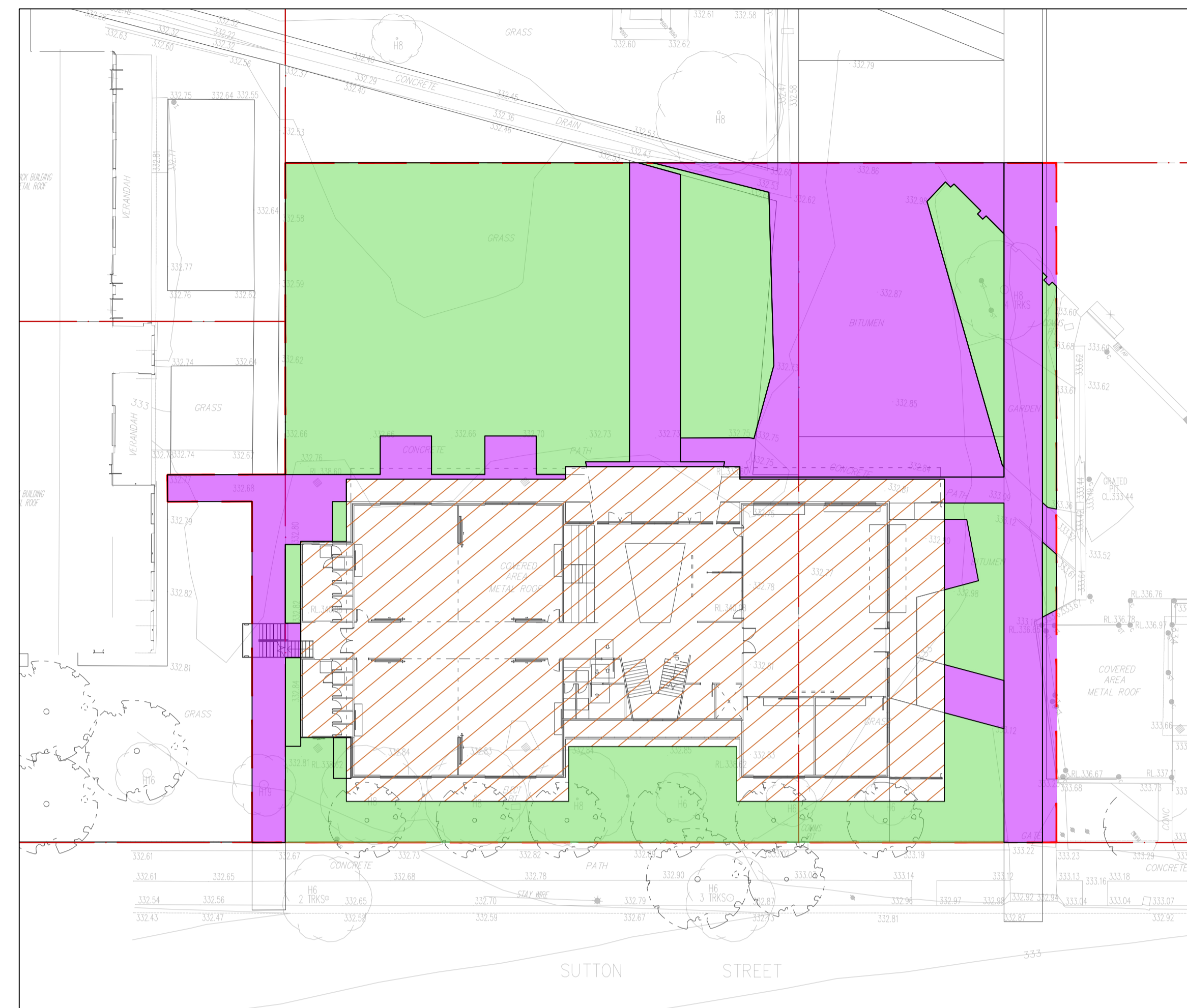
www.1100.com.au

IMPORTANT: THE CONTRACTOR IS TO MAINTAIN A CURRENT SET OF "DIAL BEFORE YOU DIG" DRAWINGS ON SITE AT ALL TIMES.



CATCHMENT PLAN - PRE DEVELOPMENT
SCALE 1:300

DEVELOPMENT SITE AREA = 3275.8 m ²	
LEGEND	AREA (m ²)
IMPERVIOUS AREA	777 m ²
PERVIOUS AREA	1723 m ²
IMPERVIOUS ROOF AREA	776 m ²



CATCHMENT PLAN - POST DEVELOPMENT
SCALE 1:300

DEVELOPMENT SITE AREA = 3275.8 m ²	
LEGEND	AREA (m ²)
IMPERVIOUS AREA	884.6 m ²
PERVIOUS AREA	1206.7 m ²
IMPERVIOUS ROOF AREA	1184.5 m ²

PRELIMINARY ISSUE
NOT FOR CONSTRUCTION

ISSUE	DESCRIPTION	APPROVED	DATE
P2	DA ISSUE		11.12.25
P1	DRAFT DA ISSUE		18.09.25

ARCHITECT

webber

Phone 02 458 1018
PO Box 937 The Junction NSW 2201
www.webberarchitects.com

Bulk 3, Level 1, 428 Harker Street Newcastle NSW 2300
newcastle@webberarchitects.com

Bulk 306, 5 Clarke Street Crown Hill NSW 2065
sydney@webberarchitects.com

BIRZULIS ASSOCIATES

CONSULTING STRUCTURAL & CIVIL ENGINEERS

583 DARLING STREET ROZELLE NSW 2039
tel: (02) 9555 7230 email: office@birzulisassociates.com
www.birzulisassociates.com

PROJECT

SACRED HEARTS CENTRAL SCHOOL
7-31 MORRIS STREET, COOTAMUNDRA NSW

TITLE

CATCHMENT PLAN

SCALES	DATE
1:300 @ A1	SEPT' 2025

DRAWN	DESIGN	VERIFIED	APPROVED
J.M	G.K	C.M	

The drawing is the copyright of Birzulis Associates Pty Ltd and may not be altered, reproduced or transmitted in any form or by any means in part or in whole without the written permission of Birzulis Associates Pty Ltd. All walls and dimensions are to be checked and verified on site prior to the commencement of any work, making of shop drawings or fabrication of components. Do not scale drawings. Use Figure Dimensions.

ISSUE	PROJECT No.	DRAWING No.
P2	251008	DA.0500

PRINT IN COLOUR

